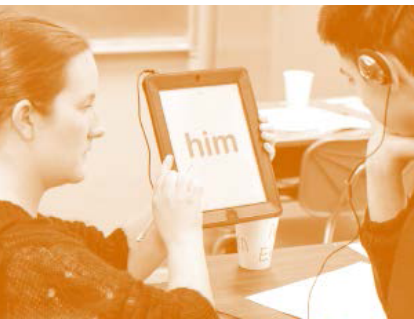


What is AT?

Any item, piece of equipment or product system, whether acquired commercially off the shelf, modified, or customized, that is used to increase, maintain, or improve the functional capabilities of individuals with disabilities.





We all like to be active and involved, but a disability can sometimes make everyday tasks challenging.



Assistive Technology (AT) can help.

AT is anything that can help a person do what they want to do, and can help a person be more independent.



AT can help in the home, at school, at work, or in the community.



AT is for anyone, whether they're young, old, or somewhere in between.



AT is for any disability, either one present at birth or acquired later.

So where can you go for help? OCALI Assistive Technology Internet Modules, local hospitals, schools, and state tech act programs can all help with your AT needs.

**For more information visit
ataem.org**